

---

**FLIGHT**

Systems Electronics Group



**DIESEL**

---

*Your Source for Precision Remanufactured Diesel Components*

# Remanufactured Diesel Electronics



---

JULY 2016

# Flight Diesel Remanufactured Plug 'N Play Electronics

Flight Diesel offers remanufactured Plug 'N Play vehicle electronics that require no additional programming to the specific application. These quality service parts will restore your diesel vehicle to proper stock functionality.



Ford® Fuel Injection  
Control Module



Ford® Injector  
Driver Module



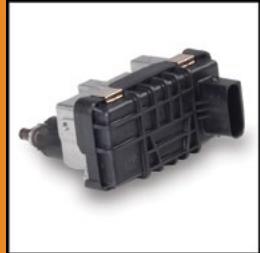
Ford® Glow Plug  
Control Module



GM® Transfer Case  
Control Module



GM® Pump  
Mounted Driver



Hella® Actuator  
(R&R)



Delphi®  
Borg Warner® S300V  
Actuator (R&R)



Garrett®  
Electro-hydraulic  
Actuator (R&R)

**For additional product  
details visit  
[www.flightdiesel.net](http://www.flightdiesel.net)  
Click on Resources /  
Product Data Sheets**

# Flight Diesel Remanufactured Advanced Control Electronics

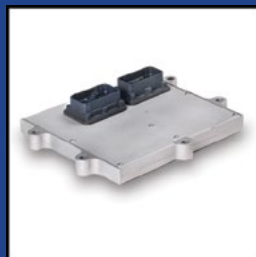
Advanced Control Electronics are a category of vehicle electronics that are typically programmed to be vehicle and application specific based on vehicle configuration and options. Smart actuators, which require special calibration tools, also fall into this category. Flight Diesel is now offering remanufactured advanced control electronics for light, medium, and heavy duty applications.



Cummins® ISB Engine  
Control Module



Dodge® Pickup Power-  
train Control Module



Cummins® Powertrain  
Control Module



Detroit® DDEC Engine  
Control Module



Cummins® Celect  
Engine Control Module



Allison® Transmission  
Electronic Control



Delphi® - Holset®  
Smart Actuator (R&R)

For additional product details visit  
[www.flightdiesel.net](http://www.flightdiesel.net)  
Click on Resources / Product Data Sheets

# Ordering Remanufactured Electronics

All Plug 'N Play electronics can be ordered by the part number either through your on-line account and/or by contacting a sales representative at the number below.

All Advanced Control Electronics require additional information to allow for the proper control software to be loaded. Flight Diesel has developed a standard list of required information that should be collected from the vehicle to obtain the proper software flash. This information will cover the following products: Cummins® ISB ECM, and Dodge® Pickup PCM.

## Standard Required Information:

- Vehicle Identification Number (VIN)
- Engine Emissions (Federal or California)
- Transmission (Automatic or Manual)
- Wheel Drive (Two or Four)
- Vehicle Mileage
- Current Part Number (as found on customers unit)

Heavy Duty Advanced Control Electronics require additional information in order to properly configure the unit. User defined parameters must be provided, in addition to the standard information, for Cummins® Select ECM, ISX ECM, DDEC ECM, and ATEC modules. Flight Diesel customer service can assist you with ordering your advanced control electronics. Please have the required information available when you call to order.



505 Fishing Creek Road • Lewisberry, PA 17339  
Phone: 717-932-7000 • Fax: 717-932-7001

[www.flightdiesel.net](http://www.flightdiesel.net)



Follow us